

A21 DWG. NO. 32799

DATE	DESCRIPTION	REV.	BY	APPD.
	DATE PART NUMBER			
	DATE PART NUMBER			
	DATE PART NUMBER			

**MARS ELECTRONICS**  
*Melbourne, Florida*

THIS DRAWING IS A DESIGN COPY. IT IS NOT TO BE REPRODUCED OR TRANSMITTED IN ANY FORM OR BY ANY MEANS, ELECTRONIC OR MECHANICAL, INCLUDING PHOTOCOPYING, RECORDING, OR BY ANY INFORMATION STORAGE AND RETRIEVAL SYSTEM, WITHOUT THE WRITTEN PERMISSION OF MARS ELECTRONICS.

UNLESS OTHERWISE STATED, DIMENSIONS ARE IN INCHES. DECIMAL PLACES ARE INDICATED BY THE FOLLOWING TOLERANCES:

0	DECIMAL PLACES 0.05
1	DECIMAL PLACES 0.01
2	DECIMAL PLACES 0.001

THIRD ANGLE PROJECTION DO NOT SCALE

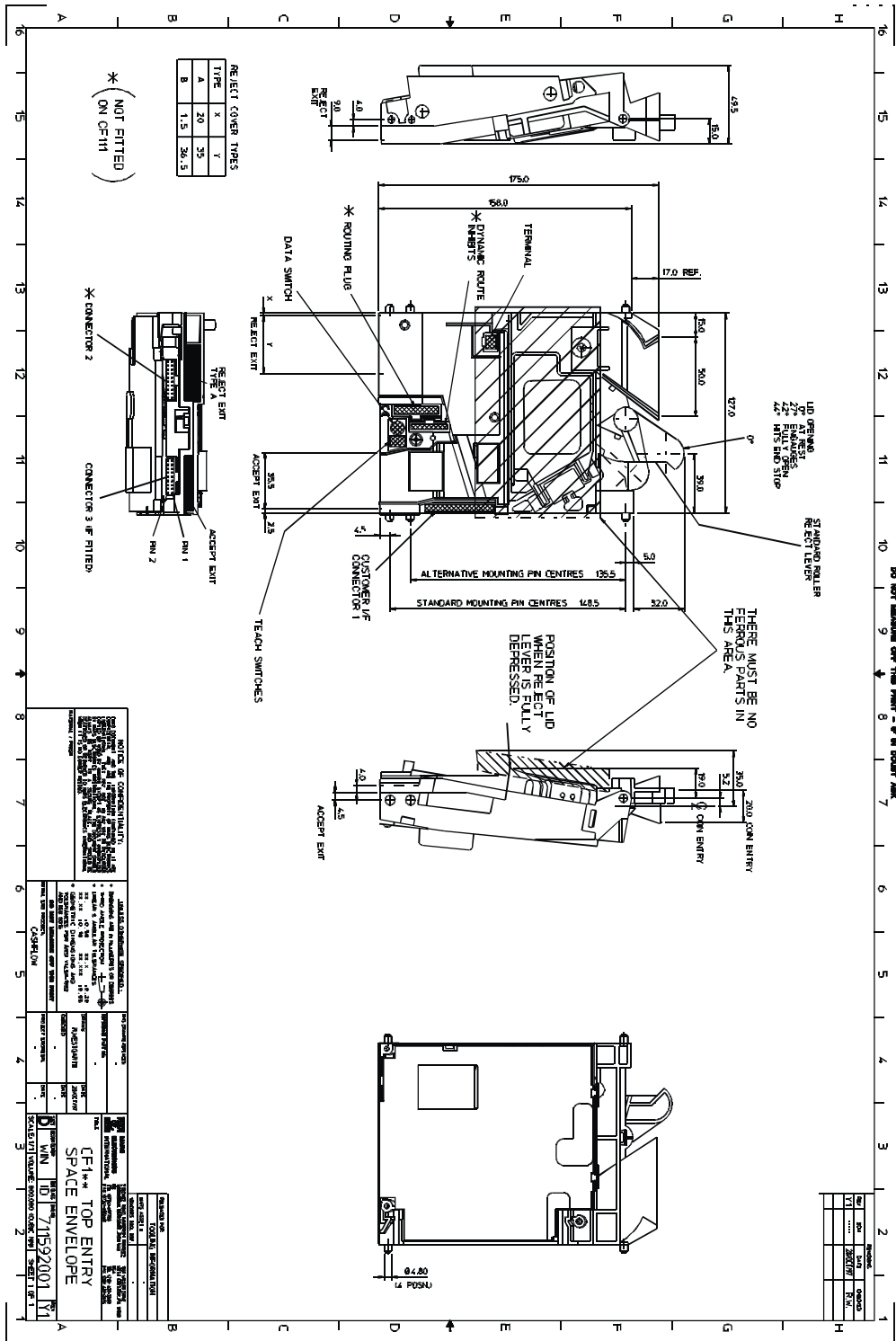
MATERIAL SPEC. FINISH +/-  
ELECTRATIC BLACK SPRAY

ORIGINALY DRAWN BY M. COMPTON'S

SCALE 1:1 PRODUCT SHEET 1 OF 1

TITLE FRONT PLATE - STANDARD -

SITE/GROUP	DWG. NO.	REV.	CLASS
33199	32799	1	CS



# CashFlow® 130 Acceptor Design Guide

